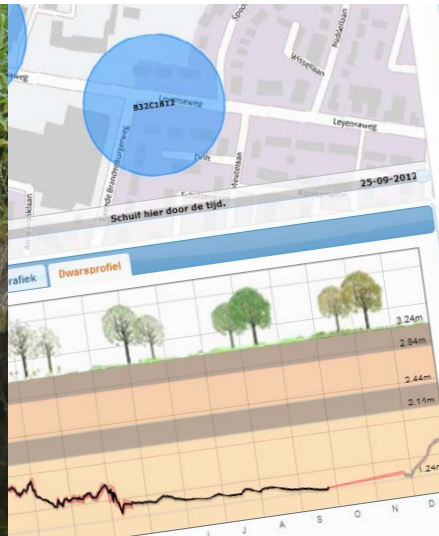
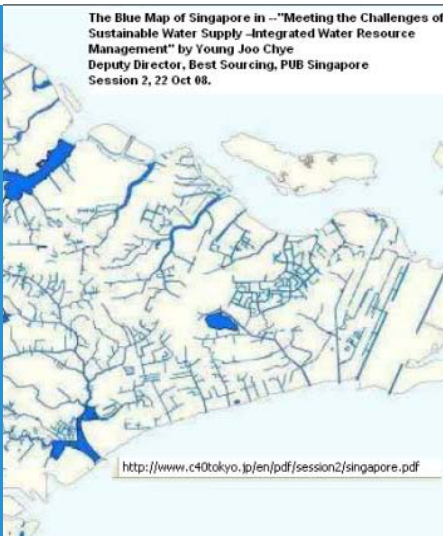


Your groundwater monitoring plan in 6 steps

Groundwater data management within easy reach



Operational monitoring network in 6 steps



Monitoring plan



Preliminary design



Detailed design

Monitoring plan

- Determine monitoring objectives
- Which data is needed?
- Which information is already available
- Which data should be provided by the monitoring network?

Preliminary design monitoring network

Main characteristics monitoring network

- Monitoring locations
- Parameters (only groundwater levels or also water quality)
- Number of monitoring points
- Aquifers to monitor
- Budget
- Data communication
- Monitoring frequency

Detailed design monitoring network

Plan ready for implementation

- Specifications monitoring wells
- Specifications data communication
- Design database
- Data verification



Implementation



Operational network



Evaluation

Implementation

- Construction monitoring wells
- Data management (data verification and database)
- Contract for operation of the monitoring network

Operational monitoring network (use of data)

- Data validation (does the network provide all information and are the monitoring results logical?)
- Provide groundwater information for construction and research projects (database)
- Assessment of available groundwater (for example back up or supplementation to present drinking water resources)
- Information available in case of unforeseen problems (flooding etc.)
- Calibration and validation of groundwater models
- Ability to detect groundwater pollution

Evaluation of monitoring network (after a few years)

- Does the network provide sufficient information?
- Does the monitoring network meet the objectives for which it was designed?
- Increase or decrease the number of observation points

Groundwater projects Worldwide

Dutch companies Eijkelpark Agrisearch Equipment and Witteveen+Bos are worldwide active on numerous groundwater related projects.



Monitoring the quality and fluctuation of groundwater

Cyprus



Research for implementing a groundwater and surface water network

Uzbekistan



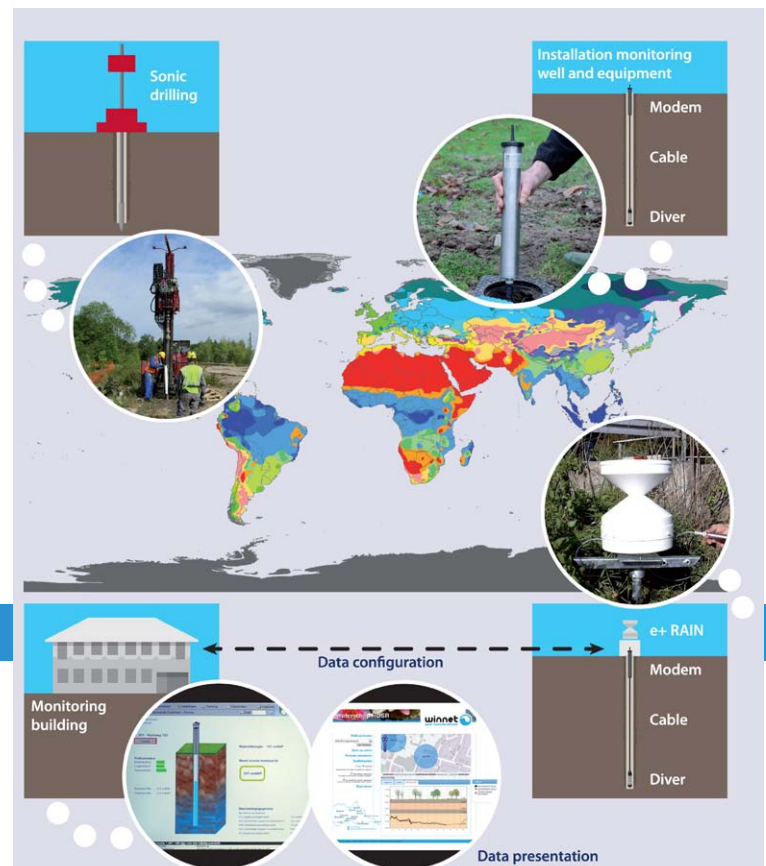
Monitoring over 1.000 points for the prevention of structural groundwater problems

The Netherlands



Survey for construction works

Azerbaijan



Worldwide presence

Eijkelpark Agrisearch Equipment and Witteveen+Bos have worldwide presence via partners and branche offices.



P.O. Box 4, 6987 ZG
Giesbeek, The Netherlands
T +31 313 88 02 00
E info@eijkelpark.com
I www.eijkelpark.com



P.O. Box 233, 7400 AE
Deventer, The Netherlands
T +31 570 69 79 11
E info@witteveenbos.com
I www.witteveenbos.com