

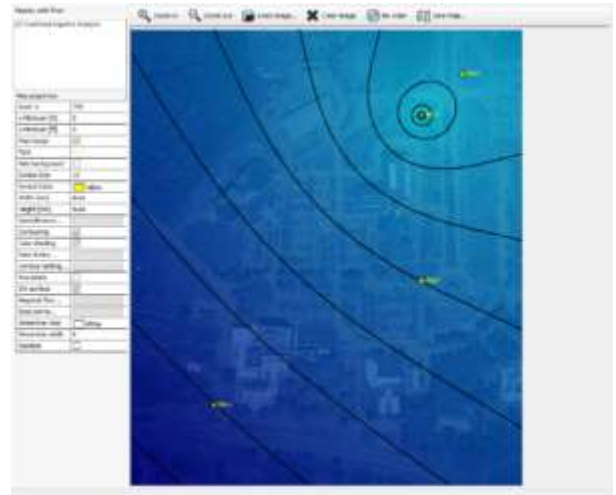
What's New in AquiferTest Pro v.7.0

It's here - **AquiferTest 7.0**! New features will allow you to do more, in less time, and with greater flexibility. Explore these powerful new features listed below.

Regional Gradients

A regional gradient (based on water surface elevation, flow direction and gradient or three known water elevations) can be added to calculated drawdown (based on a selected analytical solution) to obtain a regional contour map.*

*Available in Pro version only

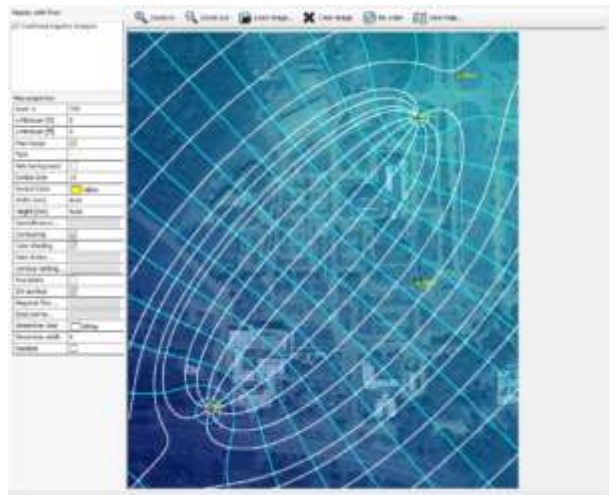


Regional gradients added added to calculated drawdown.

Streamlines

Streamlines can be added to the site plan.*

*Available in Pro version only



Streamlines added to a site plan.


New Options

The following field variables are available for the custom field in reports:

- the <It;FILENAME> variable prints the filename.
- the <It;FILENAME> variable prints the full path and filename..

Version Number Rebranding

You might have noticed we are also branding AquiferTest with the new version type of 7.0. rather than continuing with “year” branded version numbers. We hope this will make it easier for you to track changes and updates. From now on, new versions will always increment the whole number and minor releases will increment the decimal.

		Contact Info Address Company Name City, State/Province	Pumping Test Analysis Report Project: Newington Airport Number: ABCD Client: Newington Airport Authority
Location: Newington, On	Pumping Test: Confined Aquifer Analysis	Pumping Well: Water Supply 1	
Test Conducted by:		Test Date: 2/15/2017	
Analysis Performed by:	New analysis 1	Analysis Date: 2/15/2017	
Aquifer Thickness: 40.00 ft	Discharge Rate: 0 [U.S. gal/min]		
File: C:\Users\Public\Documents\AquiferTest Pro\Projects\Demo Exercise1.HYT			

The full file path and filename are displayed using a custom field variable in the report shown above.