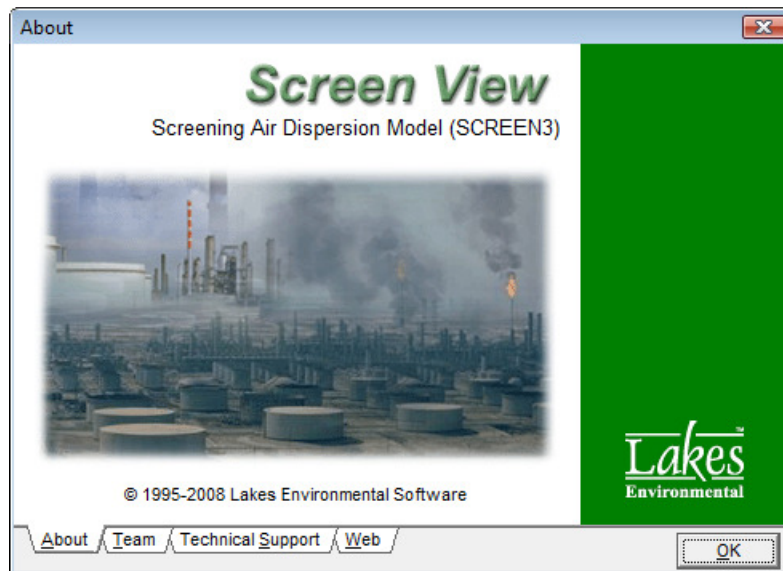


Screen View™

Interface for the US EPA Screening Air Dispersion Model - SCREEN3

Release Notes



Lakes Environmental Software
Tel: (519) 746-5995 - Fax: (519) 746-0793
E-mail: support@weblakes.com
Web site: www.weblakes.com

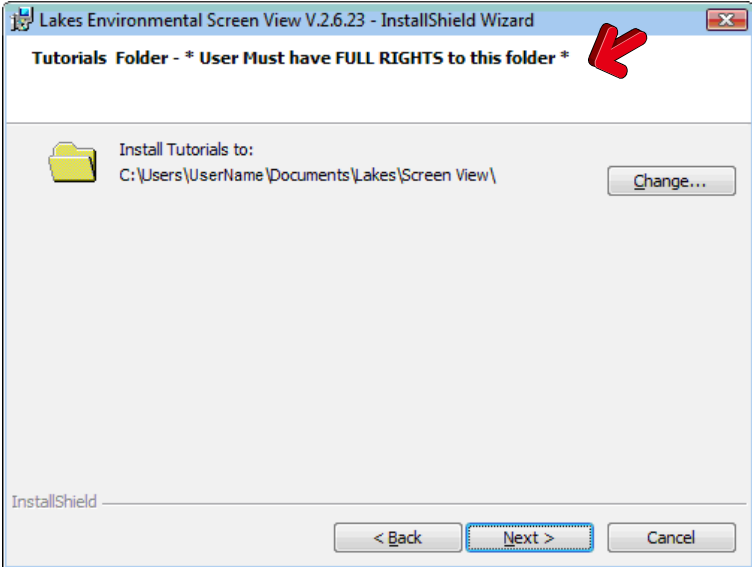


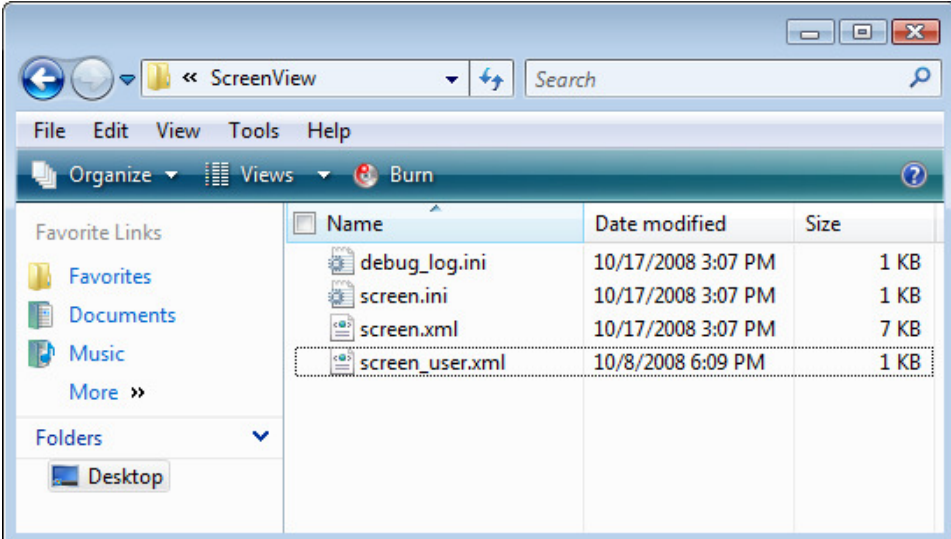
Screen View™ Version 3.0.0

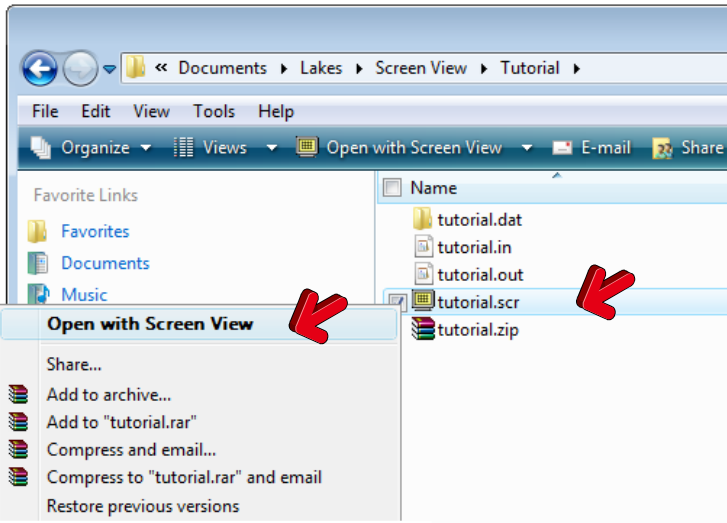
Release Notes

October 17, 2008

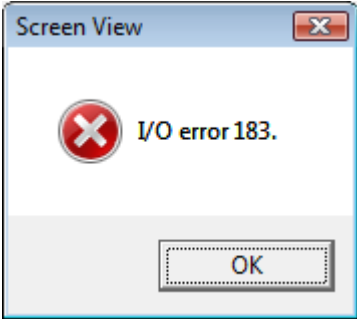
New Features

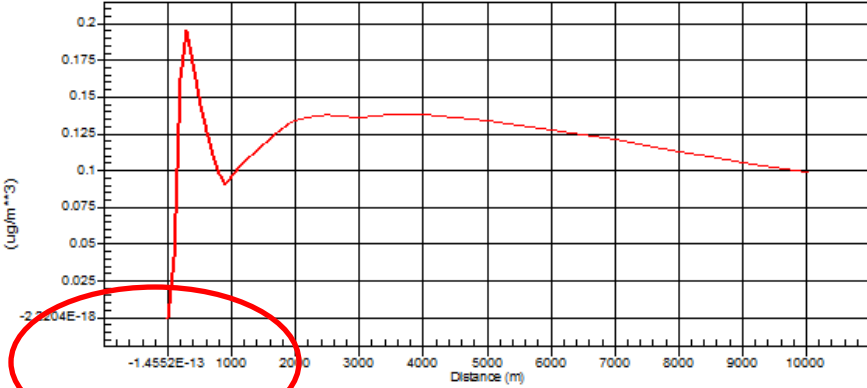
Topic	Feature Description
Installation	<p>Microsoft® Windows VISTA® Installation Compatible</p> <p>Screen View Version 3.0.0 is now compatible with the Windows VISTA operating system. The default path for the Screen View Version 3.0.0 has changed:</p> <ul style="list-style-type: none"> ▪ Old path: <i>C:\Lakes\ScreenView</i> ▪ New Path: <i>C:\Program Files\Lakes\Screen View</i> <p>The Tutorial and Example Files are now installed by default under:</p> <ul style="list-style-type: none"> ▪ Windows VISTA: C:\Users\UserName\Documents\Lakes\Screen View ▪ Windows XP & 2000: C:\Documents and Settings\UserName\My Documents\Lakes\Screen View <p>Note: Please note that the tutorial files must be installed in a folder where the user has Full Rights. During installation, you will be able to specify where to install the tutorials.</p> 

Topic	Feature Description
Installation	<p>Files No Longer Needed by Screen View</p> <p>After installing Screen View Version 3.0.0 in the new default location (C:\Program Files\Lakes\Screen View), some files will be left in the previous installation folder (C:\Lakes\ScreenView). These files are no longer necessary and they can be deleted manually. For a list of these obsolete files, please see image below.</p> 
Windows® 64-Bit Operating System Support	<p>SCREEN.EXE model Compatible with 64-Bit Microsoft® Windows® Operating System</p> <p>The original US EPA SCREEN.EXE model executable (date: 21/Feb/2006) is a 16-Bit application executable and therefore will not run under 64-Bit operating systems.</p> <p>Lakes Environmental has recompiled the SCREEN3.EXE model to support 64-Bit Windows operating systems.</p> <p>Screen View Version 3.0.0 is compatible with the following 32-Bit and 64-Bit operating systems:</p> <ul style="list-style-type: none"> ▪ Windows VISTA ▪ Windows XP Professional - Service Pack 2 or higher ▪ Windows 2000 - Service Pack 3

General	<p>Open Screen View Projects by Double-Clicking on the Project File (*.scr)</p> <p>Now you can select your Screen View project file (*.scr) and double-click on it or right-click and select <i>Open with Screen View</i>. This will automatically open your project file in Screen View.</p> 
----------------	---

Resolved Issues

Topic	Issue Description
Error Message	<p>I/O Error 183</p> <p>In some situations, when trying to run a Screen View project, an error message "I/O Error 183" would be displayed, preventing the run from proceeding. This problem has been fixed in version 3.0.0.</p> 

Topic	Issue Description
Graph	<p data-bbox="444 275 1312 306">Graph Displaying Negative Distance and/or Concentration</p> <p data-bbox="444 323 1365 485">A bug was fixed in the Graph dialog, where distance and concentration results sometimes would show as a negative value. This problem happened in cases where the minimum distance for Automated Distances was, for example, 1 meter and/or the specified emission rate was very small (e.g., 0.001g/s).</p> <p data-bbox="695 499 1089 531">Automated Distance Vs. Concentration</p> <p data-bbox="818 527 966 541">Terrain Height = 0.00 m.</p>  <p>The graph displays a concentration profile over distance. The y-axis is labeled '(ug/m**3)' and ranges from -2.204E-18 to 0.2. The x-axis is labeled 'Distance (m)' and ranges from -1.4552E-13 to 10000. A red line represents the concentration, showing a sharp peak at a very small distance, followed by a dip and then a gradual decline. A red circle highlights the negative distance value on the x-axis.</p>